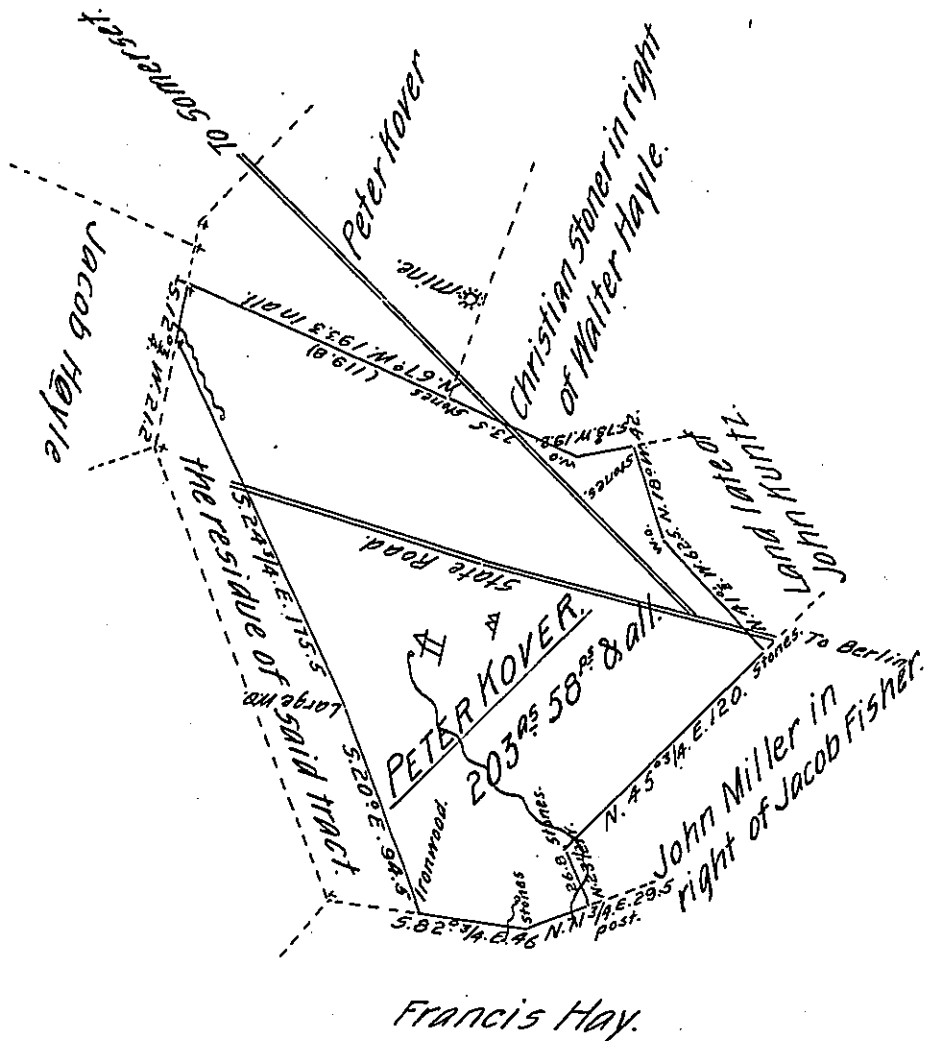


B1
30
57.4



Situate on a branch of Buffalo Lick Creek in Brothers Valley township, now Somerset County, (late Bedford) The whole tract of 245^{AS} 3/4 & all. was Surveyed the 20th day of July 1786 by Alex^c. McClean, Esquire, late Deputy Surveyor. In pursuance of a Warrant dated 29th June 1786, Granted to Walter Hayl for 150^{RS}

The above part, ie, 203^{RS} 58^{RS} & allow^e was resurveyed & divided—27th June, 1822, Agreeably to all concerned in order that it may blend with an adjoining Division off an adjoining tract in one patent.

Musser Wells, D. S.

To Samuel Cochran, Esq^r }
Surveyor General.

IN TESTIMONY that the above is a copy of the original remaining on file in the Department of Internal Affairs of Pennsylvania, made conformably to an Act of Assembly approved the 16th day of February, 1833, I have hereunto set my Hand and caused the Seal of said Department to be affixed at Harrisburg, this twentieth day of April 1905.

Loac R. [Signature]
Secretary of Internal Affairs.